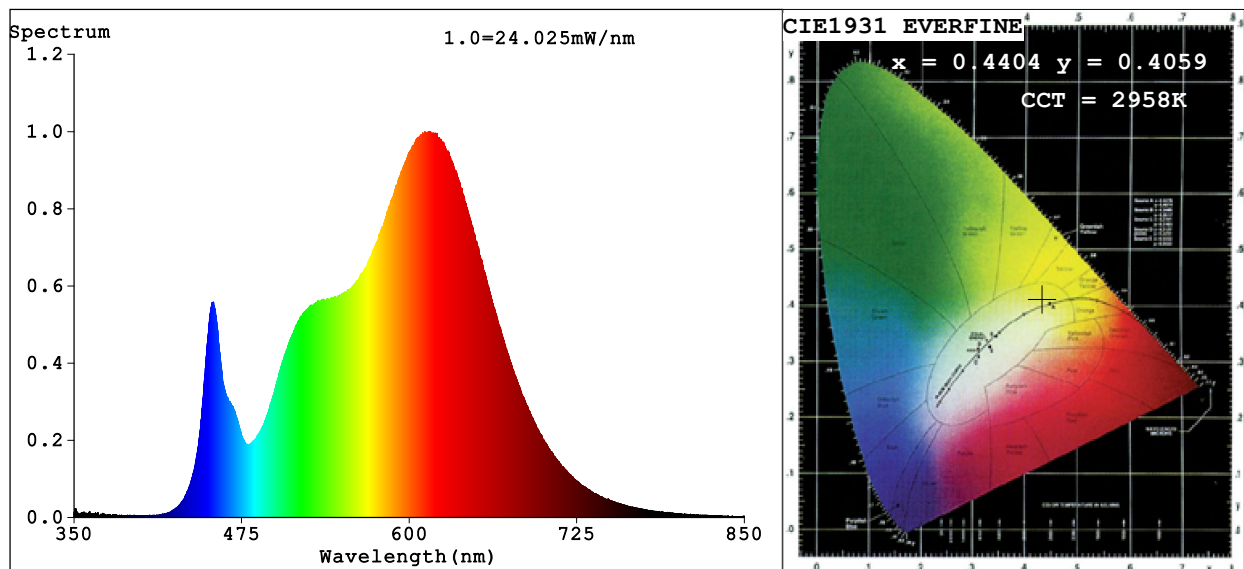


Spectrum Test Report



Color Parameters:

Chromaticity Coordinate: $x=0.4404$ $y=0.4059$ $u'=0.2520$ $v'=0.5226$
CCT=2958K (Duv=0.0003) Dominant WL:Ld =582.9nm Purity=54.0%
Ratio:R=24.8% G=72.6% B=2.6%; Peak WL:Lp=615.7nm FWHM=151.0nm
Render Index:Ra=92.5 CRI=89.3 TM30:Rf=90 Rg=99
R1 =93 R2 =97 R3 =99 R4 =94 R5 =93 R6 =96 R7 =90
R8 =77 R9 =48 R10=92 R11=97 R12=80 R13=95 R14=99 R15=87

Photo Parameters:

Flux = 1146 lm Eff. : 107.58 lm/W Fe = 3.729 W

Electrical parameters:

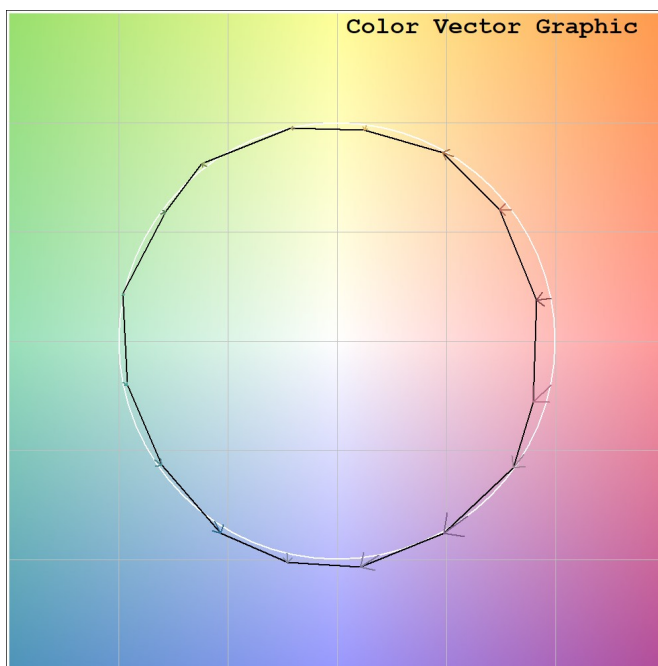
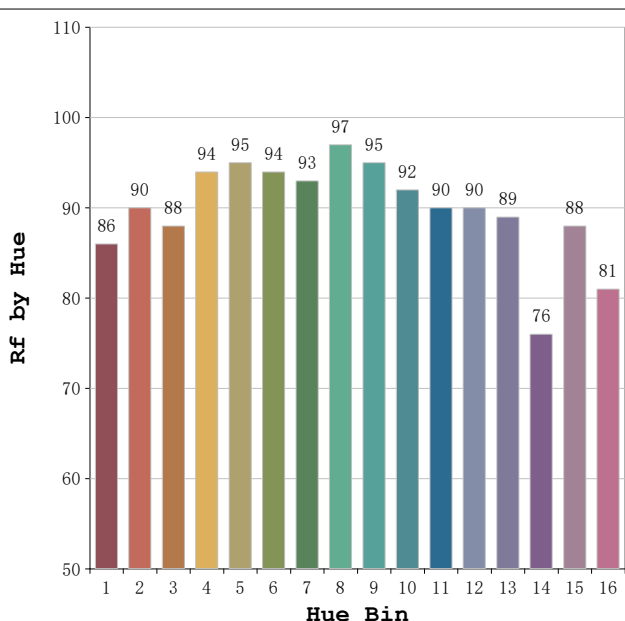
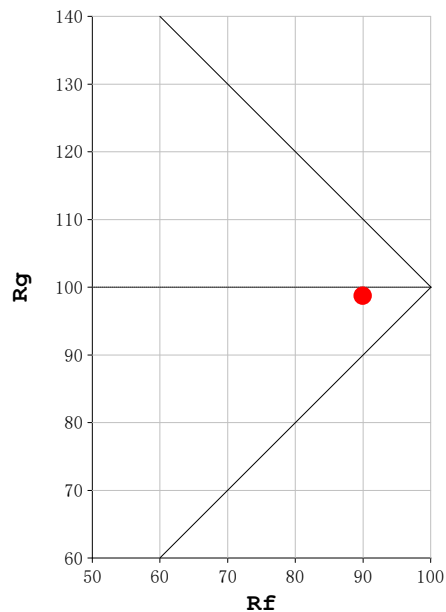
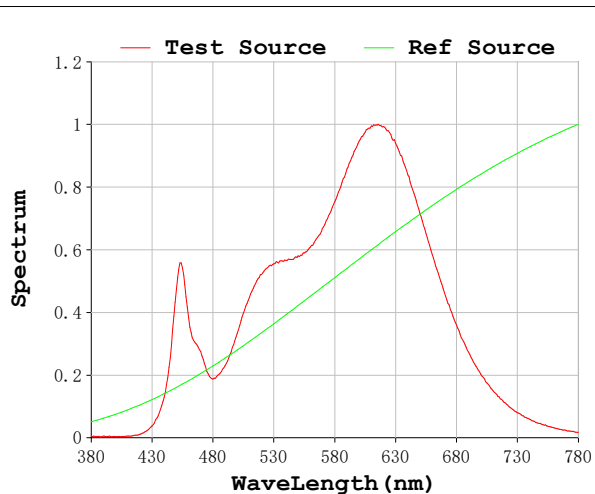
V = 23.998 V I = 0.4438 A P = 10.65 W PF = 1.000

Status: Integral T = 958 ms Ip = 42986 (66%)

Model:ecoled Cob Roll to Roll
Tester:Alejandro Hervas
Temperature:20Deg
Manufacturer:Luz Negra

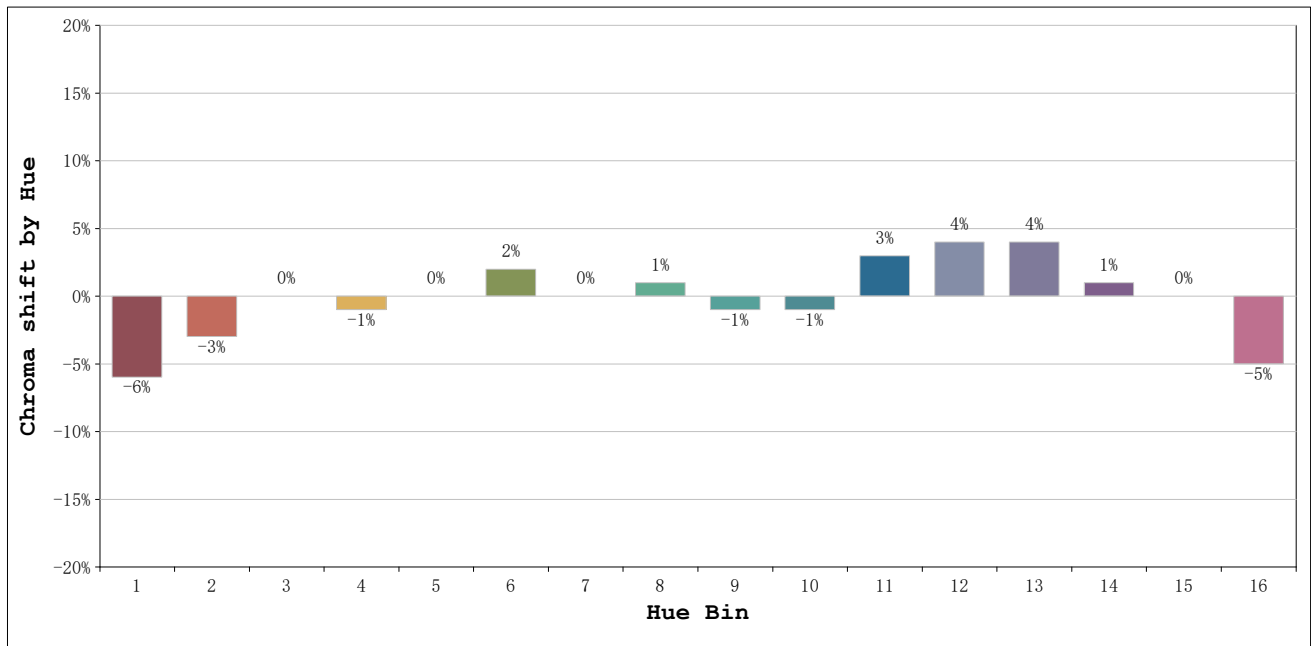
Number:31.264
Date:2026-05-28 13:31:38
Humidity:50%
Remarks:100 cm tira flexible

Rf: 90 **CCT: 2958 K** **u': 0.2520**
Rg: 99 **Duv: 0.0003** **v': 0.5226**



Model:ecoled Cob Roll to Roll
 Tester:Alejandro Hervas
 Temperature:20Deg
 Manufacturer:Luz Negra

Number:31.264
 Date:2026-05-28 13:31:38
 Humidity:50%
 Remarks:100 cm tira flexible



			Graphic shift(%)	
Hue Bin	Hue Angle	Rf	Chroma	Hue
1	0.0° - 22.5°	86	-6	0
2	22.5° - 45.0°	90	-3	3
3	45.0° - 67.5°	88	0	5
4	67.5° - 90.0°	94	-1	1
5	90.0° - 112.5°	95	0	2
6	112.5° - 135.0°	94	2	1
7	135.0° - 157.5°	93	0	-1
8	157.5° - 180.0°	97	1	0
9	180.0° - 202.5°	95	-1	2
10	202.5° - 225.0°	92	-1	4
11	225.0° - 247.5°	90	3	5
12	247.5° - 270.0°	90	4	1
13	270.0° - 292.5°	89	4	-8
14	292.5° - 315.0°	76	1	-13
15	315.0° - 337.5°	88	0	-7
16	337.5° - 360.0°	81	-5	-8

Model:ecoled Cob Roll to Roll
 Tester:Alejandro Hervas
 Temperature:20Deg
 Manufacturer:Luz Negra

Number:31.264
 Date:2026-05-28 13:31:38
 Humidity:50%
 Remarks:100 cm tira flexible